



Vyntus<sup>®</sup> Series  
guiding to the right diagnosis

# Certified Services

We care for you as you care for your patients



Our large direct service organization and our world-wide certified well-trained business partners are there to support you, when and where ever needed.

- Online and IT Services
- Phone Service
- Onsite-Service



We are sure about the reliability of our Vyntus products – accurate results and reproducibility are our passion.

# Clinical Expertise and Education Programs

Expand your Expertise

Unlock the full potential of your organization, staff and technology through a variety of educational opportunities.



Join our **onsite training** at our main training facility in Höchberg.



Learn from our **experienced Respiratory Diagnostic Experts**.



Educate to the latest **ATS/ERS guidelines**.



# Spirometry



*"Spirometry is the gold standard for the diagnosis of COPD"<sup>1</sup>*

In 2015 about 3,2 million people died from Chronic Obstructive Pulmonary Disease (COPD) – which reflects 5 % of deaths globally<sup>1</sup>.

COPD diagnosis and monitoring is vital for high-quality patient care, the Vyntus® SPIRO PC spirometer is designed to meet highest quality standards.

Choose from different spirometry systems, the basic spirometer Vyntus SPIRO, the expandable Vyntus® PNEUMO or our impulse oscillometry system the Vyntus® IOS.



**Benjamin,  
36 years**

Expiratory Reserve Volume limited.



**Li,  
9 years**

Significant bronchodilator response of Forced Expiratory Volume in one second.



Vyntus® SPIRO

The Vyntus SPIRO was born out of our obsession to perfect a spirometer that is **easy-to-use** and has the **flexibility** to provide accurate results for the general user and the sophisticated labs. Stationary or portable PC spirometer as a stand-alone device or as part of the SentrySuite network.



Vyntus® PNEUMO

**A high-end spirometer:** highly precise, focused on best quality, easy-to-use and expandable. Combine your Vyntus PNEUMO with our integrated aerosol provocation system, the Vyntus APS and unleash optional measurement capabilities as Rocc, P0.1, MIP/MEP, SNIP, rhinomanometry or compliance.



Vyntus® IOS

Based on the recording of a few tidal breaths, impulse oscillometry has been demonstrated to be **more sensitive** under resting conditions than spirometry.

Vyntus IOS allows the differentiation of central and peripheral airways resistance, measuring spirometry and can be combined with the Vyntus APS for bronchial challenge testing.



# Pulmonary Function Testing

The combination of latest technology with high-end design make our Vyntus® ONE and Vyntus® BODY the most powerful models in our Vyntus PFT line.

The innovative ultrasound technology for fast, reliable and accurate results comes standard, optimizing performance and the hygiene process.



Mira,  
32 years

Inhomogeneity of peripheral lung with dynamic hyperinflation.



Vyntus® ONE  
DL / PFT

The Vyntus ONE DL / PFT is designed as a small footprint complete PFT device that fits almost anywhere and will fit any patient. Technology improvements offer a radical leap forward in **patient comfort, accessibility and outcomes**. Benefit from both **trusted** and **innovative measurement methods**. Your Vyntus ONE is able to measure lung volumes performing the innovative FRC N<sub>2</sub> Washout measurement.



Vyntus® BODY

## Designed to be different

The Vyntus BODY stands for **high value down to the smallest details**. The innovative body plethysmograph is designed for technicians who want to **save time** with their measurement, while having **maximum flexibility**. The spacious cabin and low entry step improve **patient comfort and safety**.



Perform the whole range of PFT diagnostics:

- spirometry
- single breath diffusion
- lung volumes - FRC N<sub>2</sub> Washout
- body plethysmography
- respiratory mechanics
- and many more.



Using the MicroGard® filter for spirometry and pulmonary function testing means highly effective protection from cross-contamination and reduces the reprocessing cycle for downstream parts to three months.<sup>2</sup>

# Cardio Pulmonary Exercise Testing



Cardio pulmonary exercise testing is the tool for differential diagnosis in cardiology, respiratory and sports medicine.

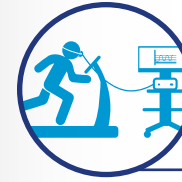
Our CPET devices are high performance athletes – **accurate, flexible and integrated** to easily perform tests taking advantage of our **user designable post-test evaluation and workflow solutions**.

Choose the most suitable diagnostic modality for your cardio pulmonary function lab and interface it with a wide range of bikes, treadmills, blood pressure monitors and ECGs.



**Matteo,  
29 years**

Significant improvements in training evaluation:  $VO_{2max}$  and VT2 improved, better HR ( $VO_2$ ) response.



**Vyntus® CPX**

Combining **high measurement quality with ease-of-use and workflow** driven CPET evaluation. The professional exercise **diagnostic** device can be used on patients and athletes, whether children or adults. Indirect calorimetry with canopy and high/low  $FIO_2$  are available as options.



**Vyntus® ECG**

Extend your devices with the 12-Lead-Bluetooth ECG and profit from: **one user interface – one combined report – one program to train – one central database, network interface and HIS connection**. The Vyntus ECG can also be used as a stand-alone device.



**Vyntus® WALK**

Making your six-minute walk tests truly mobile. Using the integrated and wireless Vyntus WALK gives you the possibility to **focus on your patient**. Having **on screen** and the quality checks ensure **reliable data**.



# One device – all possibilities

## Limited by testing volume or space availability to justify separate PFT and CPET systems?

Maximum flexibility and no space for compromises. Our **Vyntus ONE** combines **Pulmonary Function Testing and Cardiopulmonary Exercise Testing** to perfectly adapt to your diagnostic needs.

Expand this flexibility by combining your Vyntus ONE with other devices out of the Vyntus product range and a various range of bikes and treadmills.



**Charlotte,  
62 years**

Diffusion Capacity below lower limit of normal.

Reduced exercise performance, decreased Ventilatory Efficiency and increased ventilatory equivalents.



**Vyntus® ONE**

## The power of ONE

We re-engineered every facet of Vyntus ONE's breathing circuit, to achieve significant improvements in **patient's comfort** and **accuracy**. Innovative technologies as the **double shot technology**, the **flow path valve** and the **eDemand valve** are the key.



# SentrySuite® Software – Empowering your Vyntus devices



## EASE-OF-USE MEASUREMENT CONCEPT

Keep the overview without any program switches. All important steps: calibration, patient data entry, measurements, interpretation and reporting can be navigated within ONE screen.



## ELECTRONIC QUESTIONNAIRES

- Choose between
- Desktop version or
  - Vyntus QUESTIONNAIRE App for tablets



## SENTRYSUITE NETWORKING

Connect all your measurement devices and review workplaces in one network and profit from one central patient database and the possibility of a HIS interface.



## WORKFLOW DRIVEN REVIEW

Save time with the stationary or web-based physician's review tool.



## GUIDANCE & QUALITY

- Real-time operators and patient coaching
- Acceptability and repeatability check against ATS/ERS
- Biological and mechanical quality control



## SECURITY

- Authentication
- Authorization
- Audit



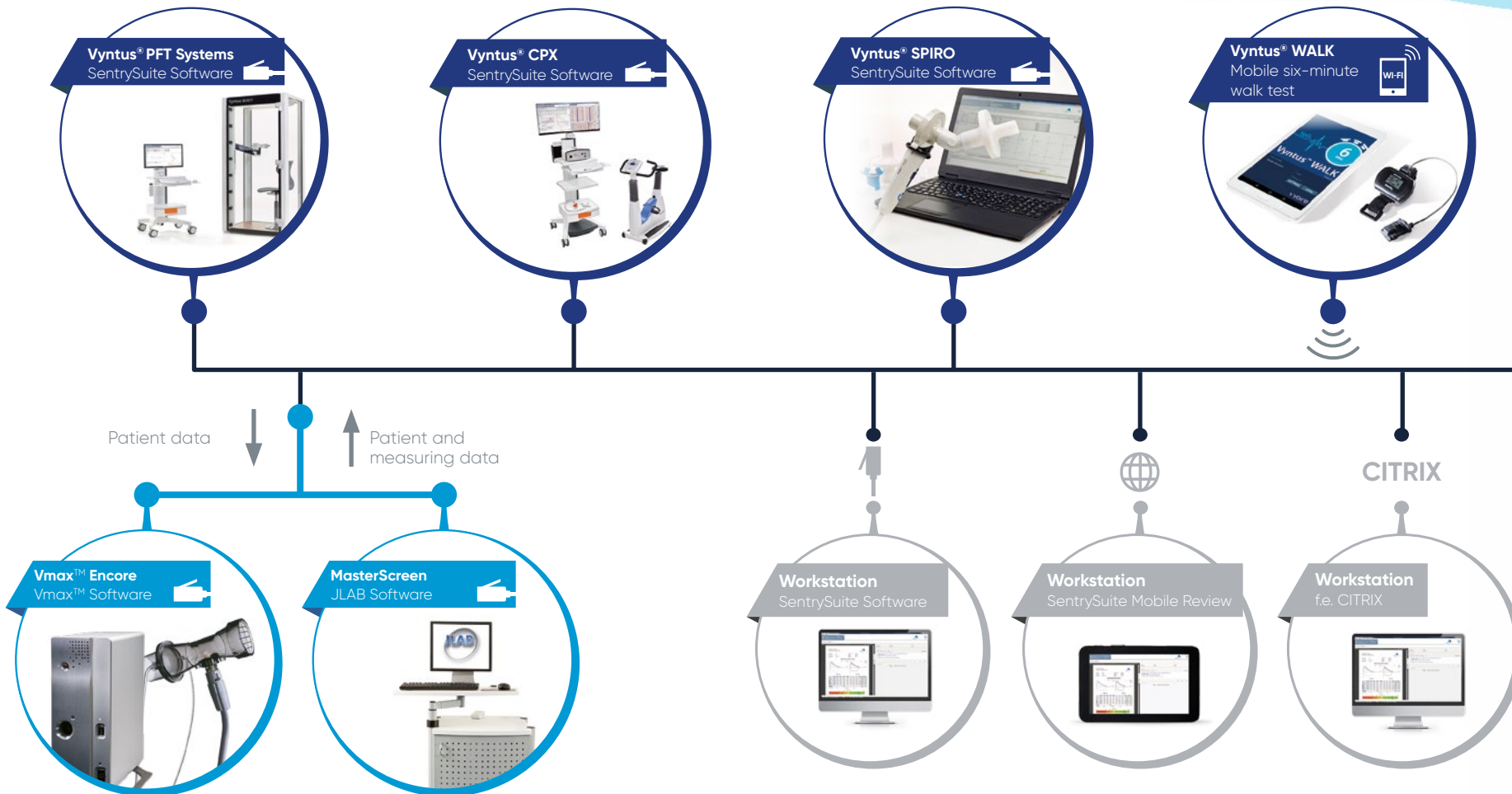
## CLINICAL RESEARCH

SentrySuite provides easy access to your patient data.

# Networking

The united data of SentrySuite

## Devices powered by SentrySuite Software



### Older Devices

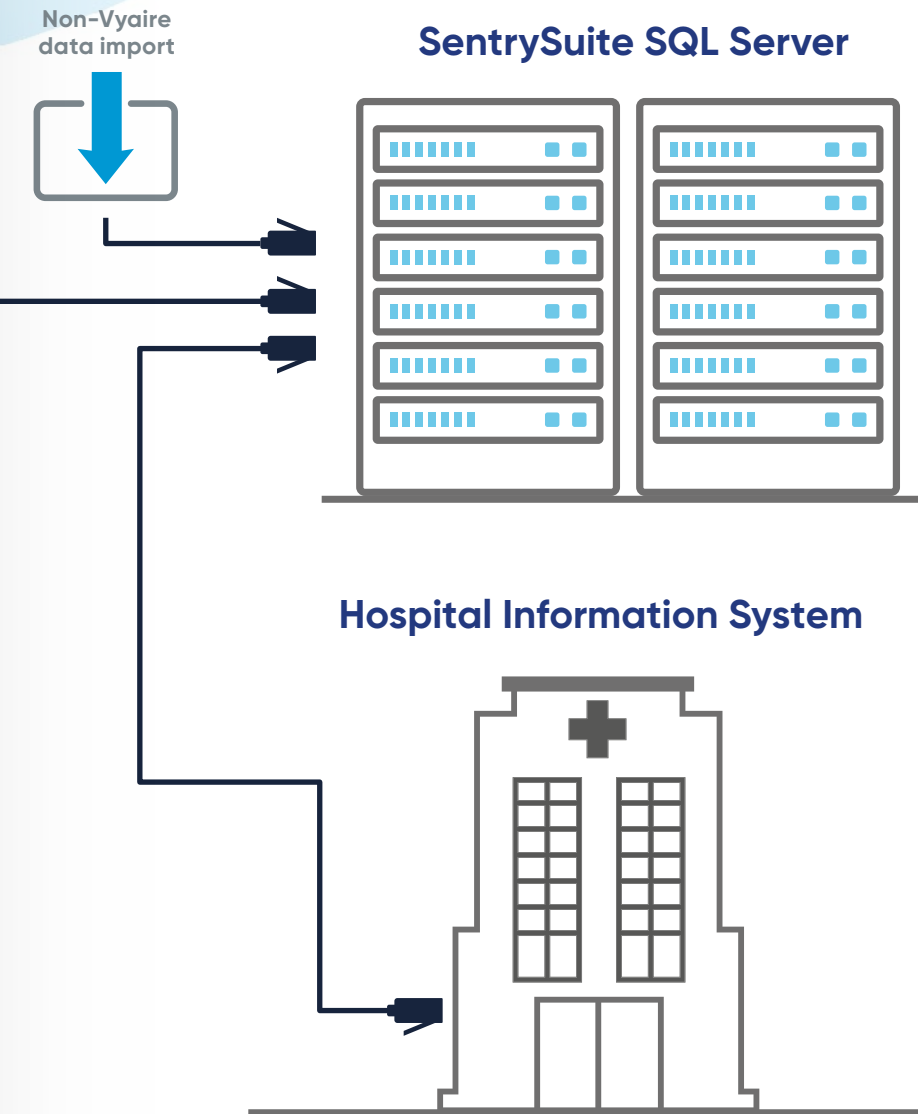
Renew your lab step by step. **Vmax™ Encore** or **JAEGER®** devices running **JLAB Software** connect to the **SentrySuite** database.

### Physician's review workplace

Use your existing network environments: **client-based, web-based, Citrix.**

## Central Patient Database and HIS Interface

Server – SQL unlimited – HL7 – web-based – HIS – DICOM – GDT



### One central patient database, so many advantages:

- One-time patient data entry saves time
- Several measurements from different devices on one single report
- Measure spirometry one time only and use it for further measurements like SB Diffusion or CPET
- Avoid duplication of effort – changes or creation of new reports, layouts, predicted sets are globally deployed
- Automatic backup secures important patient data

### Connect your cardiopulmonary lab with your HIS using SentryConnect

- The powerful interoperability solution. Create your individual solution. Our **experienced IT specialists** are there for you every step of the way.
- Easily retrieve patient data from your HIS and send back the measurement results
- HL7 messaging with discrete data and PDF graphics providing full visual reporting to clinicians
- Use orders with worklists
- Modules for advanced tasks like **billing**
- GDT interface for praxis systems





<sup>1</sup>Kristina L. Baley: The Importance of the Assessment of Pulmonary Function in COPD, Medical Clinics of North America, Volume 96, Issue 4, July 2012, 745-752

<sup>2</sup>based on the Bio Burden DIN EN ISO 11737-1: Report 18AA0088

#### GLOBAL HEADQUARTERS

Vyaire Medical  
26125 N. Riverwoods Blvd.  
Mettawa, IL 60045  
USA

 Vyaire Medical GmbH  
Leibnizstrasse 7  
97204 Hoechberg  
Germany  
+49 931 4972-0 tel  
+49 931 4972-423 fax

CE 0123

[vyaire.com](http://vyaire.com)

© 2019 Vyaire Medical, Inc. or one of its affiliates. All rights reserved. Vyaire, the Vyaire Medical logo and all other trademarks are trademarks or registered trademarks of Vyaire Medical, Inc. or one of its affiliates. Medical devices class IIa according to Medical Devices Directive 93/42/EEC. Please read the complete Instructions For Use that come with the devices or follow the instructions on the product labeling. | VYR-GLB-1800003 (2.0)