

iQ3



Butterfly iQ3.

Meet our easiest-to-use POCUS device with the sharpest image quality, twice as fast data processing, AI, advanced imaging tools, user-centric ergonomics, and outstanding scan time.

Clearer images. Easy diagnostic decisions. Excellent image quality. Intuitive anatomy identification. All made for you.

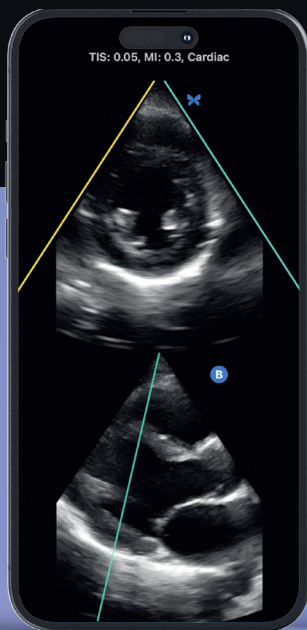
Butterfly iQ3, powered by Ultrasound-on-chip™ technology. Access three waveforms with the world's only single-probe, whole-body handheld device.

Highest quality, rapid imaging.

Butterfly iQ3 offers unparalleled imaging quality with lightning-fast data processing.

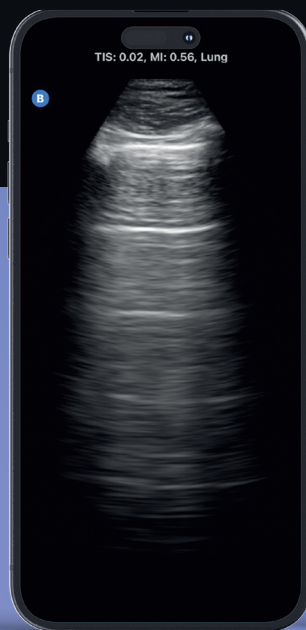
With a clarity so extraordinary, it enables you to swiftly and confidently diagnose conditions, transforming patient care. Simply connect the probe to your compatible iOS or Android device, select your preset in seconds with the swipe of a finger — and start scanning.

With over 20+ presets, here are just a few that make Butterfly best-in-class:



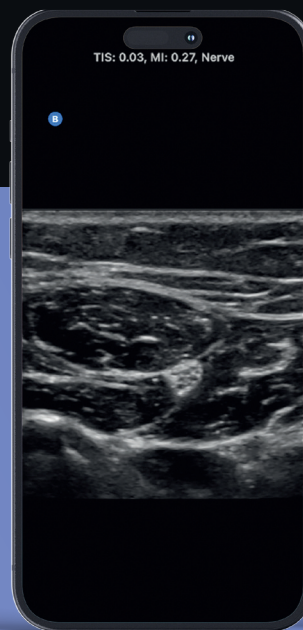
Cardiac

Perform fast TTE, evaluate suspected valve disease, and see the heart in two planes simultaneously.



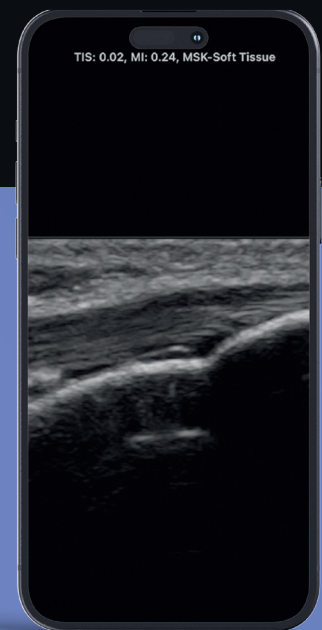
Lung

Evaluate respiratory distress and reliably detect the presence of B-lines with our Auto B-line Counter tool.



Nerve

Perform nerve blocks under ultrasound guidance for better success rate and faster speed.¹



MSK

Assess tears and fractures and support return-to-play decisions, in the clinic or on the sidelines.

1. Lewis, Sharon R et al. "Ultrasound guidance for upper and lower limb blocks." The Cochrane database of systematic reviews vol. 2015,9 CD006459. 11 Sep. 2015. doi:10.1002/14651858.CD006459.pub3.

For prescription use only. Butterfly iQ3™ is a portable ultrasound system designed for external ultrasound imaging. Read the User Manual for warnings, precautions and/or contraindications.